

Seawolf Desktop

Hello,

Thank you to have chosen the only control program of Wallpaper on 2 screens. "Seawolf Desktop".
Indeed I developed this program because I did not find any manager of wallpaper allowing me is to have an image different on each one of my 2 screens from work where and ô great luxury! only one image into panoramic crossing all workspace.



The formats of the recognized files image are:

BMP, GIF, TIFF, JP(E)G, PSD, WMF, EMF, PCX et PNG.

Mode an image by screen (2 different images):

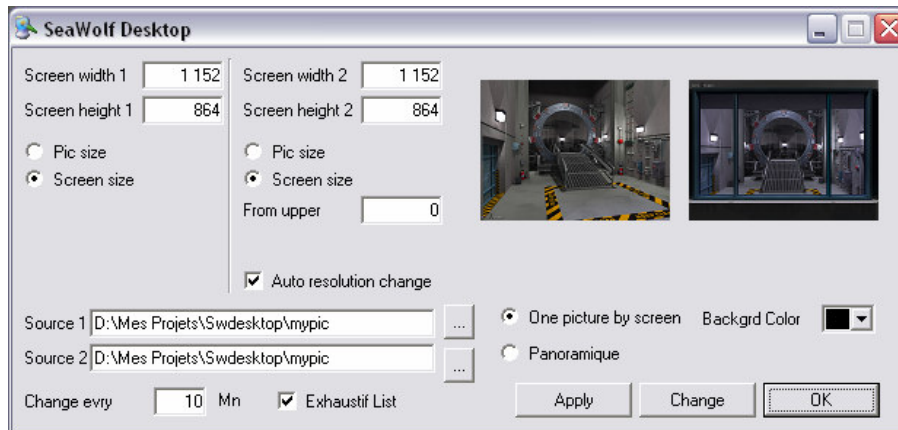
This mode is activated when the selector [**One picture by screen**] is activated. You can then choose both differing repertory "Source1 and 2" (who can be identical) or the images will be research randomly and in under repertories. The images in progress are displayable in thumbnail.

Options for the mode on picture by screen:

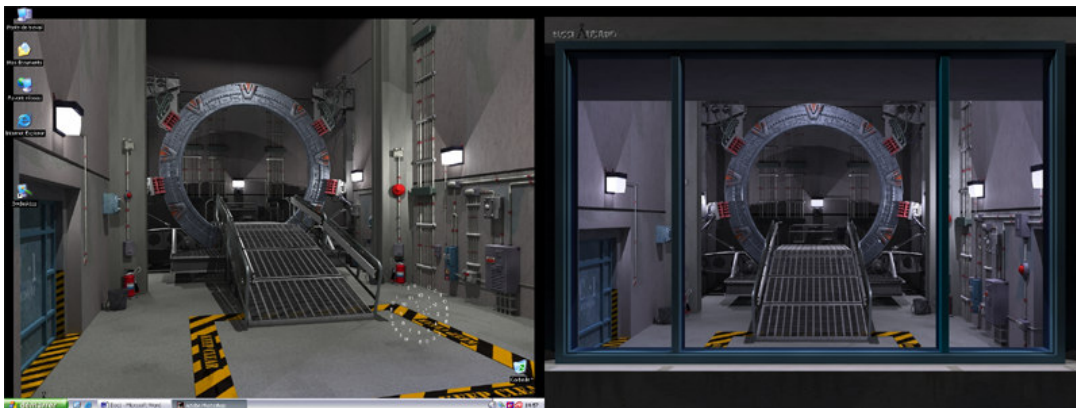
- For each screen have it can choose if the images posted with their size of origin or adjusted to the size of the screen.
 - **Pic size**
 - **Screen size**

These options this finds under information of resolution of each screen.

- *The research of the images in the repertories is random but one can activated the option **[exhaustive List]** for posted the images which one already is. This function and independent for each source (1 and 2) (it may be thus if the repertory is the same one for source 1 and 2 to have images on a screen which will already have been posted on the other.)*

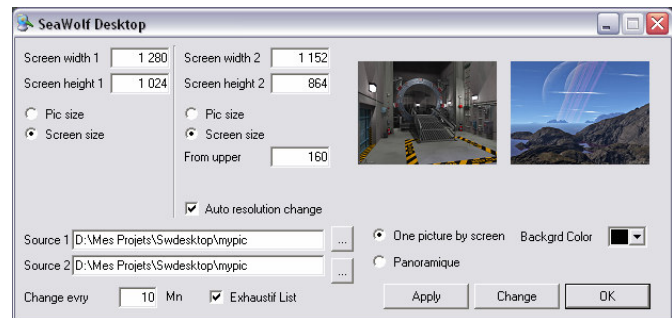
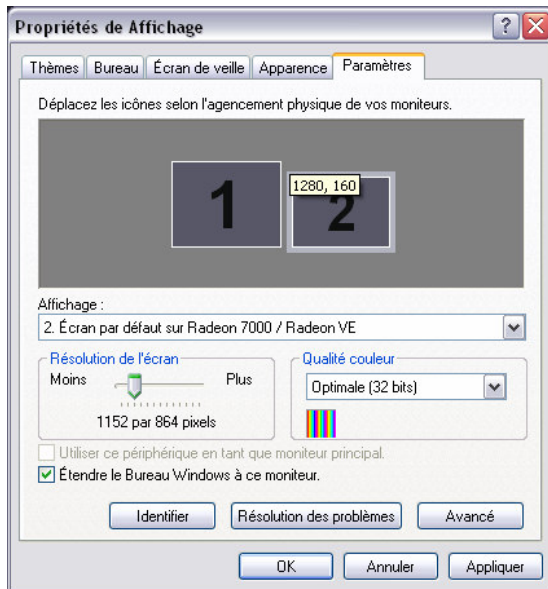


The interface of "Seawolf Desktop" in 2 images mode.



Mode "one picture by screen" (of the same screens resolution).

- If your two screens are not same resolution the option **[From upper]** allows you to adjust the position of the image of the 2nd screen. With this intention use the properties of posting to seize and adjusted the shift in cantered pixel allowing you your images.



Here the shift between screen 1 and 2 is of 160 pixels. It is this value which you seize in [From upper].

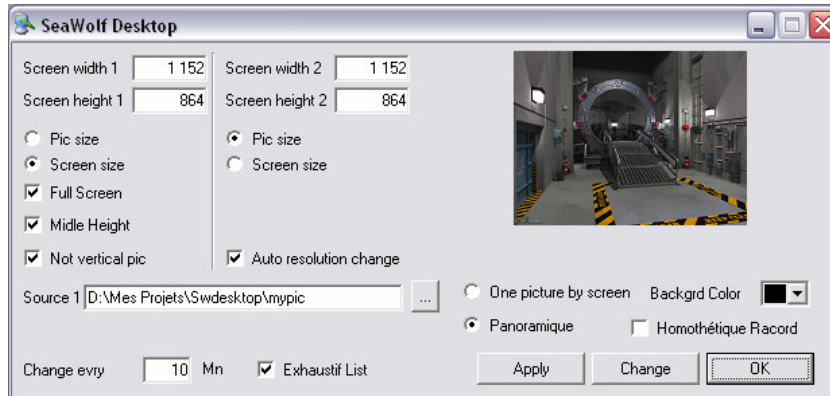


Mode "One picture by screen" with screens of different resolution and 2nd to shift of 160 pixels lower than 1st.

Panoramic mode (1 picture spread out on the 2 screens):

This mode is activated when the selector **[Panoramic]** is activated.

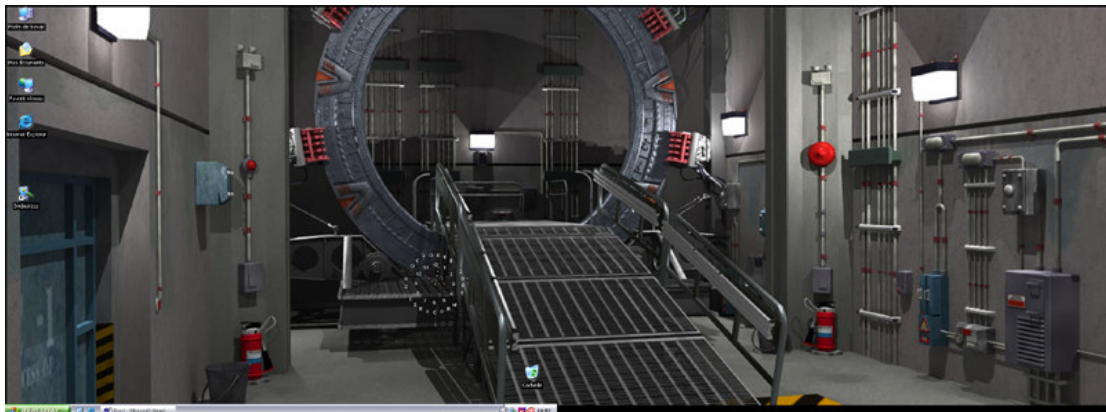
You can then choose the directory "Source1" or the images will be research randomly and in under repertories. (The image in progress is displayable in thumbnail.)

**Options for the Panoramic mode:**

- Have can choose if the images is posted with the size of origin or is adjusted with the size of the screen.
 - **Pic size**
 - **Screen size**

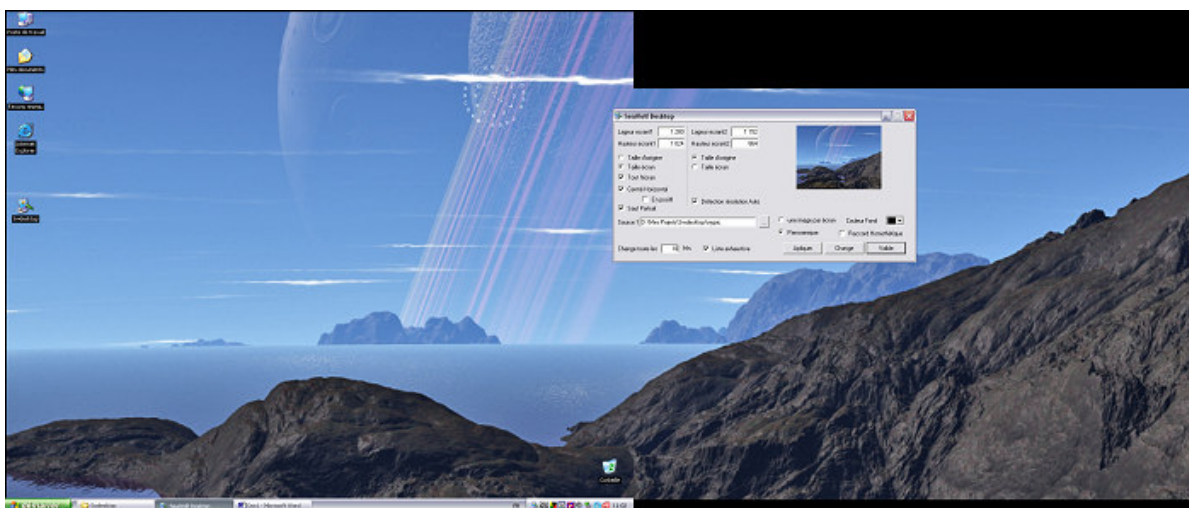
This option finds under information of resolution of screen 1.

- The displayed picture uses the resolution in the smallest height of the two screens to be posted in entirety. In the (general) case or the 2nd screen is at lower resolution, the beginning of the picture on screen 1 will start on the same level as the part of the picture this finding on the 2nd screen, thus allowing to have the image in entirety in its height. But that causes a space between the top of the screen and the beginning of the picture on the screen 1. One thus can if it is wished force the image to use all the height of the screen 1 select of it the option **[full screen]** to entirely fill it and thus remove this empty space. On the other hand the top of the image on screen 2 will not be visible.



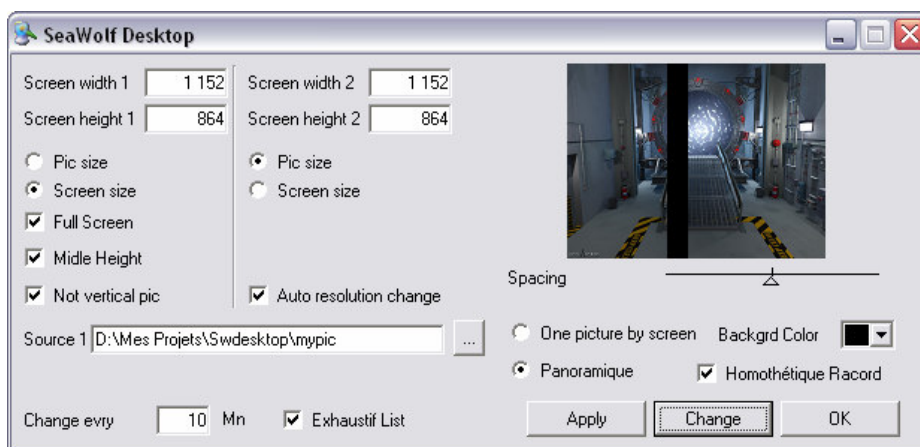
Panoramic mode on 2 of the same screens resolution in mode [Middle height].

- By default the picture is whole, but if that resolution in height is higher A that of the screen and that the option [Screen size] is activated then the image "is adjusted" in the height to be able to be entirely displayed. The option **[Middle height]** allows for an image higher than the resolution of the screen or in mode [Screen size] of kept the proportion of filing by posting this one of manner "cantered" in to the height.
- In mode [Middle height] the option **[Not vertical pic]** makes it possible not to apply horizontal centring to the images in portrait (higher than broad) only the images in landscape will be centred.



Panoramic mode on 2 screens of different resolution in mode. [Middle height]
(the top of the image on screen 2 is not visible)

- In mode [Middle height] the option **[Not vertical pic]** makes it possible not to apply horizontal centring to the images in portrait (higher than broad) only the images in landscape will be centred.
- The option **[Homothetic Racord]** makes it possible to have visually panoramic "continuous" between the two screens like if the image passed behind the edges coupled "joint" of the two screens (cf below). "apparent" spacing is regulated by the cursor [Spacing] which appears under the thumbnail at the time of the activation of this option. A black band visualizes the separation of the picture.

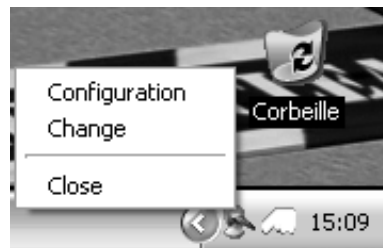




Panoramic mode on 2 screens in **[Homothetic record]** and **[Middle height]** mode.

General options of "Seawolf Desktop":

- At the 1st launching of the application the main window enables you to carry out the configuration of your Wallpapers and the various views. Once validated by **[Ok]** "Seawolf Desktop" places an icon "Tray" in the taskbar. A click on this icon changes Wallpaper, two clicks posts the window of parameter setting, a click with the right button of the mouse display a contextual menu with the various options.



- La période de changement des wallpapers se paramètre dans **[Change toute les]** en minutes.
- The cyclic change period of wallpaper parameter in **[Change every]** in minutes.
- **[exhaustif List]** allows not to see posting several times the same image on a screen, until all the images all of the repertory are displayed. Then have starts again the random research of the directory and these sub-directories.
- **[Backgrnd Color]** allows choosing the fill colour of the visible office when the images are not in full screen.
- **[Auto resolution change]** allows adapting the automatic size of the wallpapers if you change the resolution of a screen. If you want to manually modify the resolution of the screens in "Seawolf Desktop" is to increase or reduce the zone of display, you must deactivate this function not to lose your manual parameters.
- **[Apply]** Allows without changing the images in progress, to change the parameters of display.
- **[Change]** allows changing the wallpapers manually. Function accessible by a left click on the icon "tray" from "Seawolf desktop" or also in the contextual menu by a right click.
- **[OK]** Close the window of parameter setting and save your parameters.

Known dysfunctions:

"Seawolf desktop" uses technology "Activates desktop" of Windows; on the XP version where it was tested the following problems were identified.

- It may be at the time of a change of session that the wallpapers are not centered any more horizontally.
 - Solution: Go in the properties of Desktop in the "Desktop" part, click on [OK] then press F5 to refresh the Desktop. If it do not have sufficient! Replace by an image then return on the wallpaper of "SWDesktop".
- Le changement de mode Panoramique ou 2 Images peut selon les systèmes ne pas être pris en compte au 1^{er} changement.
 - Solution: forcez un autre changement bouton [Change] ou allez dans les propriétés d'affichage dans l'onglet "Bureau" cliquez sur [OK] puis faire F5 pour rafraîchir le bureau. Si ce n'ai pas suffisant remplacer par une image puis revenez sur le wallpaper de "Seawolf Desktop".
- The change of Panoramic mode or 2 Images can according to systems' not be taken with at the 1st change.
 - Solution: Force another change button [Change] or go in the properties of Desktop in the "Desktop" part, click on [OK] then press F5 to refresh the Desktop. If it do not have sufficient to replace by an image then return on the wallpaper of "SWolfDesktop".
- The images in the Photoshop format can according to layers present not be posted correctly.
 - Regulated in a forthcoming version.