

Free GDT from MRH Quality Contracting LTD.

Free GDT is a free true type font that includes standard drawing and geometrical tolerance symbols. Free GDT Console is the user friendly interface to help you generate the tolerance control you require for professional look inspection reports.

Free GDT console

Free GDT
Geometrical Drawing and Tolerance utility (BETA)

☒Frame

[] [I] [] [()] [< >] [L 7]

@ μ ±

✓ ✓ ✓

⊕ ⊖ ⊥ ∠ // ↗ ↘ □ ○ ∕ − =

⌒ ⌒ ∅ Ⓢ Ⓣ Ⓜ Ⓜ Ⓢ Ⓢ Ⓢ Ⓢ ° "

Free GDT Geometrical Drawing and Tolerance utility
By MRH QUALITY CONTRACTING LTD

[] [] []

⊕ ↗ ↘ ⊥

Ⓢ

Q W E R T Y U I O P

A S D F G H J K L BACK

Z X C V B N M

SPACE

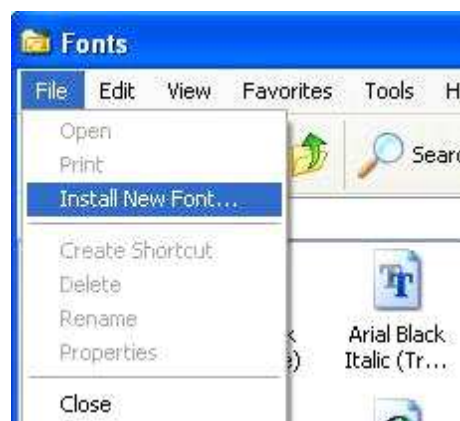
7 8 9

4 5 6

1 2 3

0 . ,

Before using the Free GDT console the Free GDT font needs to be installed into. The font is available for download from www.freegdt.com.



Installing the font is generally completed as follows: press **START, CONTROL PANEL, FONTS**.

From the Fonts folder press **FILE, INSTALL NEW FONT**, browse to and select the Free GDT font.

For a detailed install procedure please refer to your Windows documentation.

Free GDT Console.

The Console is only available on line at www.freegdt.com why not add it to your favourites.

The Console is split into five different sections. These sections are:

Free GDT
Geometrical Drawing and Tolerance utility (BETA)

1

2 ☒ Frame

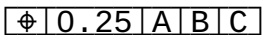
3

4

5

1. Text box. Tolerances are built up in the text box by clicking the buttons in all the other sections or by clicking into and typing directly into.
2. Control frame buttons. The buttons in this section are used for the control frame of tolerances, they may also be used for drawing bubbles. Turning the Frame checkbox on/off will change between characters with or without the control frame (except characters in section 3).
3. Standard drawing symbols. These characters are only available without the control frame.
4. Geometrical tolerance symbols.
5. Standard keyboard characters. Capital letters only available from the console keyboard, lowercase characters are available by clicking into the Text box and typing.

Generating your first Geometric tolerance control frame.

A simple geometric tolerance may look like this . This tolerance is created by the following keystrokes:



Okay, so you've now created your first geometric tolerance control frame. Problem is it's only in the Free GDT Console. To transfer hi-light the text in the textbox then either right click and select copy or press *CTRL C*, the text is now copied to your computers clipboard.

Next open the target application navigate to the desired location then press *EDIT*, *PASTE* or press *CTRL V*.

The first thing you see may look like “ ĒĤŖřöœĂŖĀŖŔĔŖĕŧ ” to display the geometric tolerance correctly you need to change the font of your target application to Free GDT. Select the pasted text and change the font to Free GDT.

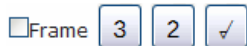
Note: The Free GDT font includes the standard English alpha numeric characters, and can be used as a standard font removing the need to change font continually.


Modifying a geometric tolerance.

If when creating a geometric tolerance you make an error or miss a character modifying couldn't be easier. Click into the textbox at the desired location and add characters or remove them using your keyboard.

Creating standard drawing symbols.

To create a standard drawing symbol has one minor difference. To create 32✓ symbol use the following keystrokes:



If the ☐Frame checkbox is not turned off before  32✓ will be displayed.

Creating tolerance as a image file.

To create a geometric tolerance or standard drawing symbol as an image can't be done directly from Free GDT, but is easy to do. Create the text you require as described previously, open an arts package such as Paint, create a textbox and paste the text changing the font to Free GDT.

So what's different with Free GDT?

The main differences with Free GDT are:

- Intuitive Console user interface for quick and easy creation.
- Can be used as a standard font as the standard alpha numeric characters are not used for the geometric or drawing symbols.
- Geometric symbols are available either with or without the control frame.
- ✓/✓/□□√⊕⊗⊙⊚⊛⊜⊝⊞⊟⊠⊡⊢⊣⊤⊥⊦⊧⊨⊩⊪⊫⊬⊭⊮⊯⊰⊱⊲⊳⊴⊵⊶⊷⊸⊹⊺⊻⊼⊽⊾⊿ symbols are included
- Free GDT is a Mono spaced font so works great with CMM software.
- Inspection reports are no longer tied to companies who have bought a specialised font. Just email a link to the Free GDT website along with your report.

Advertising on Free GDT.

Free GDT is the “go to application” for geometric tolerances.

If you provide products or services to engineers Free GDT provides a targeted audience for your company.

For full details how Free GDT can help promote your company locally, nationally or inter-nationally please visit the www.freegdt.com website.