

INSTALLING THE DRIVER — WINDOWS

Downloading the Drivers

Your ZED-R / GS-R has firmware installed already but in order for your Windows computer to be able to communicate with the device you will need to install Drivers onto your computer.

IT IS VERY IMPORTANT ANY PREVIOUS DRIVERS FOR EITHER DESK ARE UNINSTALLED FIRST.

To uninstall go to Start > All Programs > Allen and Heath Ltd > Uninstall Allen and Heath Firewire

Driver version 3.5.5 and above now works for both ZED-R and GS-R so there is no longer a need for separate drivers.

The Driver installer software is available to download from the Allen & Heath website at: <http://www.allen-heath.com/Downloads/>

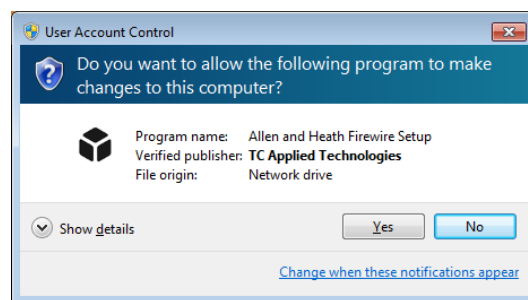
Microsoft Windows Vista, Windows 7 and Windows 8 Installation:

Make sure that the ZED-R / GS-R is **NOT** connected to your computer.

Unzip the driver package contents to your computer.

Run the Installer program by double clicking it (the ZED-R / GS-R should still be disconnected).

When asked, click **Yes** to allow the program to make changes.

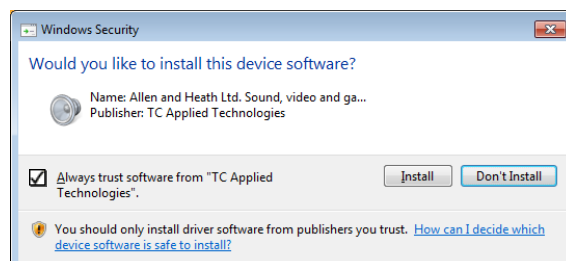


In the following windows click:

Next, Next, Next, Install.

If prompted, check the '**Always trust software from TC Applied Technologies**' box and click **Install**.

Finally, click **Finish** to re-start your computer.



Connect the FireWire lead from your ZED-R / GS-R to the FireWire Host port on your computer and power on the ZED-R / GS-R.

The Drivers for ZED-R / GS-R will now be installed and ready to use, a message may appear in the system tray to tell you.

The Allen & Heath FireWire Device control panel shortcut icon will be displayed on your desktop. The control panel enables the device settings such as sample rate and buffer size to be adjusted and allows new firmware to be uploaded to your device.

PLEASE MAKE SURE THAT THE DEVICE FIRMWARE VERSION CORRESPONDS TO THE INSTALLED DRIVER VERSION

For example, device firmware version 4.1.0.xxxxx, Driver version 4.1.0.xxxxx - see the **Firmware Update Guide** for more information

The control panel will function only if a device is connected to your computer via FireWire. If there is a connection problem a window showing the message "No Devices Found, Connect Device(s)" will be displayed.

In your computers programs list, the control panel program and uninstaller will appear under **Allen and Heath Ltd.**